

## Anti-H\_EGFR hIgG1 Antibody(Necitumumab)

### 产品信息

|                 |        |
|-----------------|--------|
| GM-49155AB-10   | 10 µg  |
| GM-49155AB-100  | 100 µg |
| GM-49155AB-1000 | 1 mg   |

### 抗体信息

|                    |   |
|--------------------|---|
| Species Reactivity | Human   |
| Clone              | Necitumumab   |
| Source/Isotype     | Monoclonal human IgG1, $\kappa$   |
| Application        | Flow cytometry; ADCC  |
| Specificity        | Detects EGFR.   |
| Gene               | EGFR  |
| Other Names        | ERBB, ERBB1, ERBP, HER1, NISBD2, PIG61, mENA  |
| Gene ID            | 1956(human)   |
| Background         | <p>The epidermal growth factor receptor (EGFR; ErbB-1; HER1 in humans) is a transmembrane protein that is a receptor for members of the epidermal growth factor family (EGF family) of extracellular protein ligands. The epidermal growth factor receptor is a member of the ErbB family of receptors, a subfamily of four closely related receptor tyrosine kinases: EGFR (ErbB-1), HER2/neu (ErbB-2), Her 3 (ErbB-3) and Her 4 (ErbB-4). In many cancer types, mutations affecting EGFR expression or activity could result in cancer. Deficient signaling of the EGFR and other receptor tyrosine kinases in humans is associated with diseases such as Alzheimer's, while over-expression is associated with the development of a wide variety of tumors. Interruption of EGFR signalling, either by blocking EGFR binding sites on the extracellular domain of the receptor or by inhibiting intracellular tyrosine kinase activity, can prevent the growth of EGFR-expressing tumours and improve the patient's condition.</p> |
| Storage            | Store at 2-8°C short term (1-2 weeks).Store at $\leq$ -20°C long term. Avoid repeated freeze-thaw.  |
| Formulation        | Phosphate-buffered solution, pH 7.2.  |
| Endotoxin          | < 1 EU/mg, determined by LAL gel clotting assay   |

Version:3.1 Revision Date:12/25/2023

## Data Examples

### Flow cytometry

The recommended usage range is 0.5-4  $\mu\text{g}$  per test. H\_EGFR CHO-K1 Cell Line(Catalog # GM-C19964) was stained with Anti-H\_EGFR hIgG1 Antibody (Catalog # GM-49155AB) or isotype control antibody, followed by anti-Human IgG APC-conjugated Secondary Antibody.

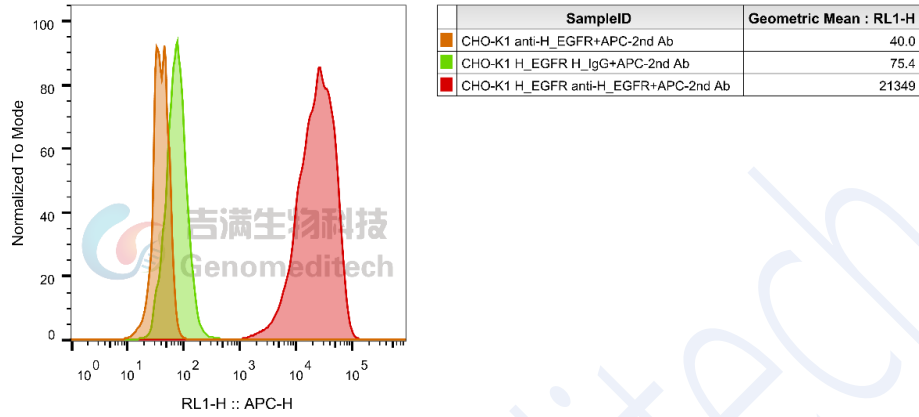


Fig 1. FACS

### ADCC

ADCC Fc $\gamma$ RIIIa(158V) Jurkat Effector Cell Line (Catalog # GM-C05619) were used as effector cells and H\_EGFR CHO-K1 Cell Line (Catalog # GM-C19964) as target cells. Serial dilutions of Anti-H\_EGFR hIgG1 Antibody(Necitumumab) (Catalog # GM-49155AB) were added. EC50 for this effect was 0.5851  $\mu\text{g}/\text{mL}$ .

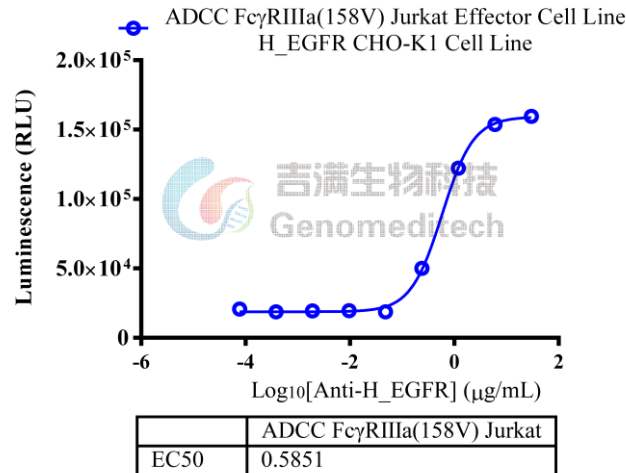


Fig 2. ADCC